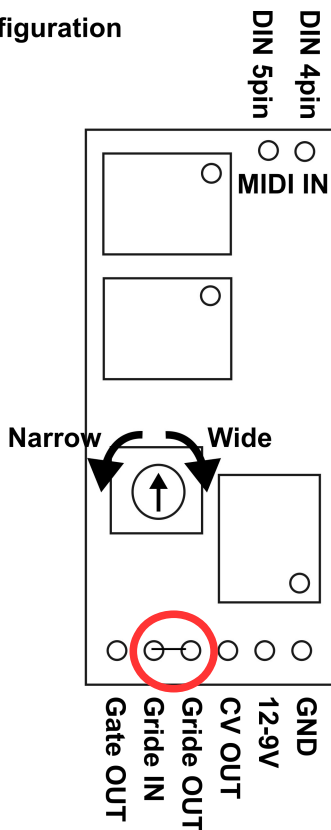


MINI MIDI IF connecton chart

Revision F

Normal Configuration



Power Source

Both configurations, needs power source. This board has 3 terminal regulator on board. And you need over 9V for input. 12V is also alright.

Wrong connection + and - may kill the board. Be careful about it

Normal Configuration

Grid will be controled by MIDI only.

Do not install additional capacitor. And short Grid Out and IN.

Knob operation Configuration

You can controled gride time by your additional pot. The curve of gride is capacitor discharge curve.

Install additional capacitor. 0.47uF/16V is recommended. And connect pot between Grid Out and IN.

If you need more long time then increse its value.

Tunning

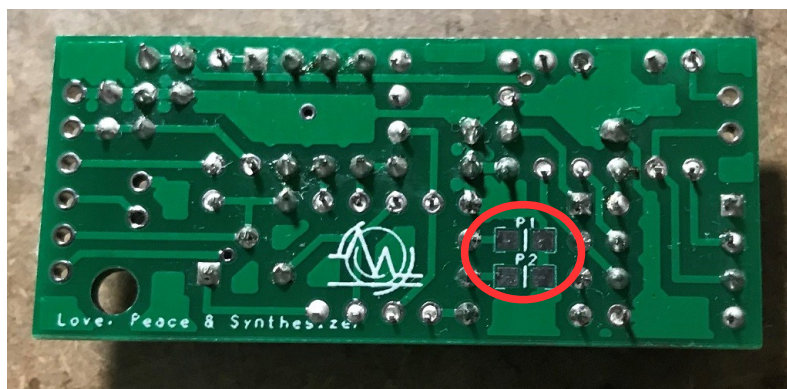
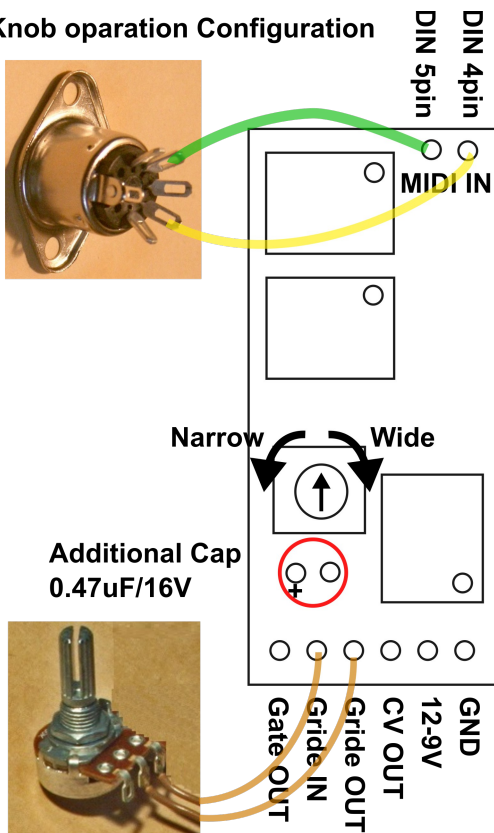
You can tune octave span by the trimer on the board. If the span of octave narrow then tweek it to c.w. way. Or if it's wider, tweek it to anti c.w.

Tweeking it, the total tune also flows. It's not easy. Try it!

Changing MIDI Channel

This is back side of the board and you can find the soldering pads marked P1 and P2. You can change MIDI ch by short them.

Knob operation Configuration

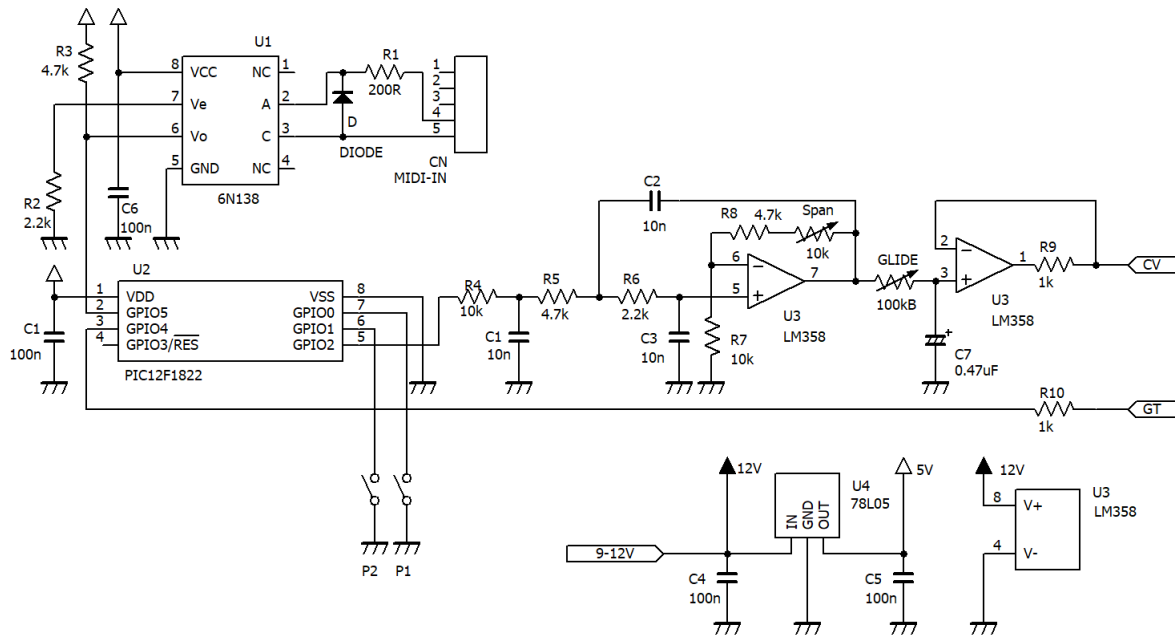


MIDI CH	Short Pads	
	P1	P2
1	Open	Open
2	Short	Open
3	Open	Short
4	Short	Short

(to be continued)

When you add the mod on the board, you also need to restart the whole board. MIDI ch is defined when it restart.

Schematics



MIDI Implement chart

function	Transmit	Recive	Memo
basic Channel power on	X	1	It can be changed from 1 to 4
Mode	X	4	Omni Off - Mono mode
Note #	X	20-127	
Velocity	X	X	
After Touch	X	X	
Pitch Bend	X	0	Depth is set to 2 semitones by default. I can be chanded by CC.
Ctrl change	X	0	Modulation wheel
1	X	0	Glide rate
5	X	0	Modulation Rate for vibrate
76	X	0	NRPN LSB, MSB
98,99	X	0	RPN LSB, MSSB
100,101	X	0	All Sound Off
120	X	0	
Prog change	X	X	
Common			
Song Pos	X	X	
Song Sel	X	X	
Tune Req	X	X	
RealTime			
Clock	X	X	
Active Sensing	X	X	
Commands	X	X	

MINI MIDI IF connecton chart

Revision F

based on MINI MIDI IF rev F
 wriitten by Motohiko Takeda @ beatnic.jp
 Sep-17, 2019 3rd edition
 Copyright beatnic.jp 2019

beatnic.jp